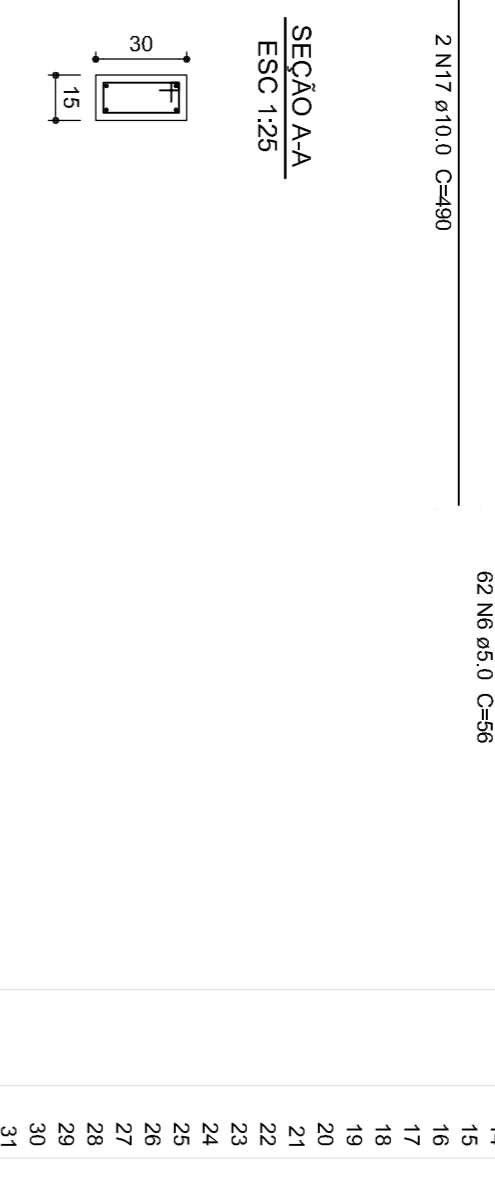
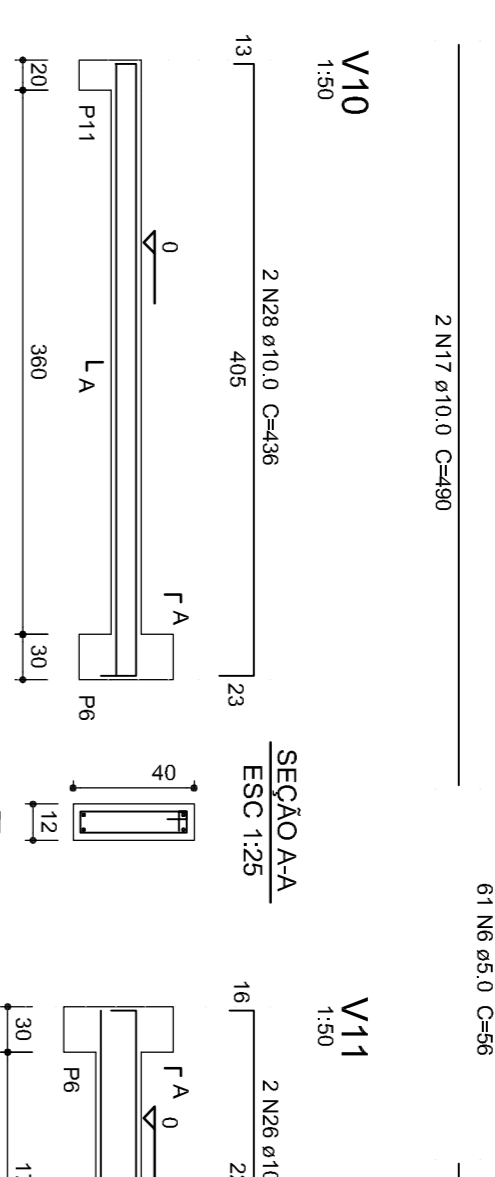
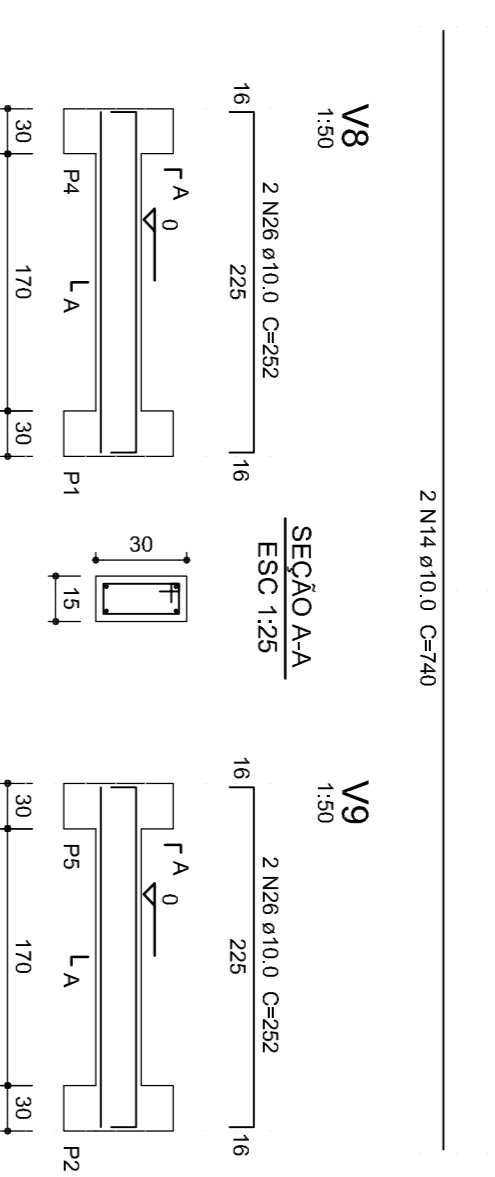
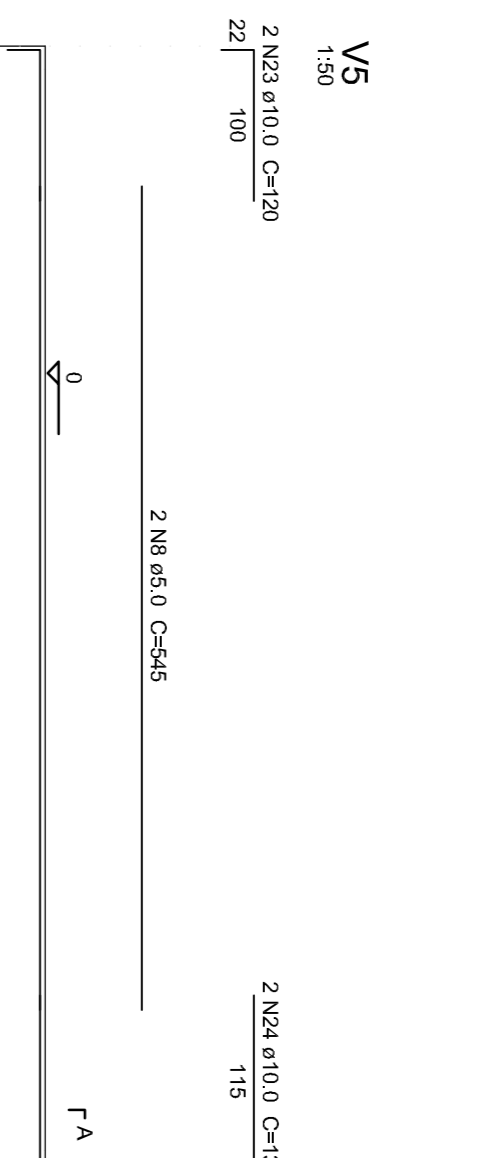
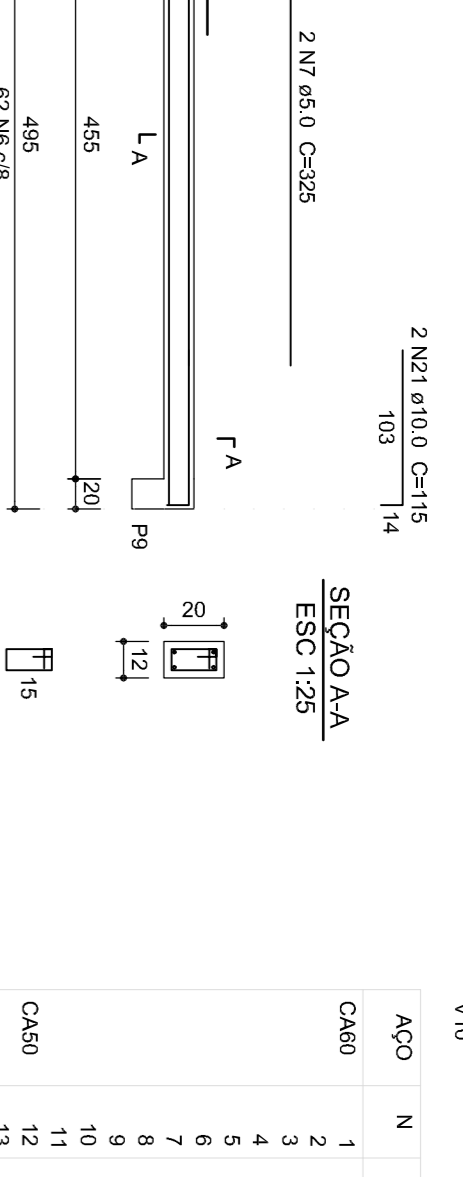
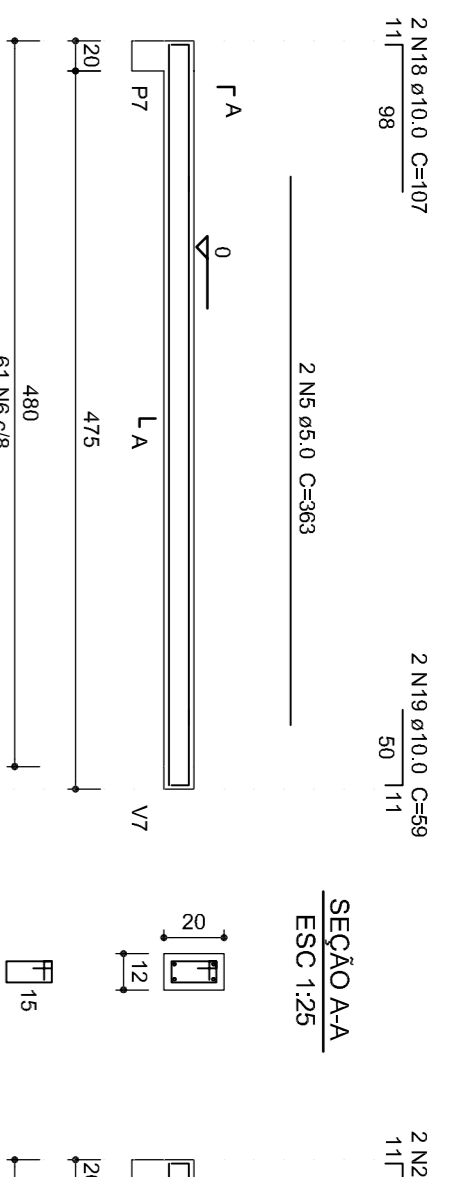
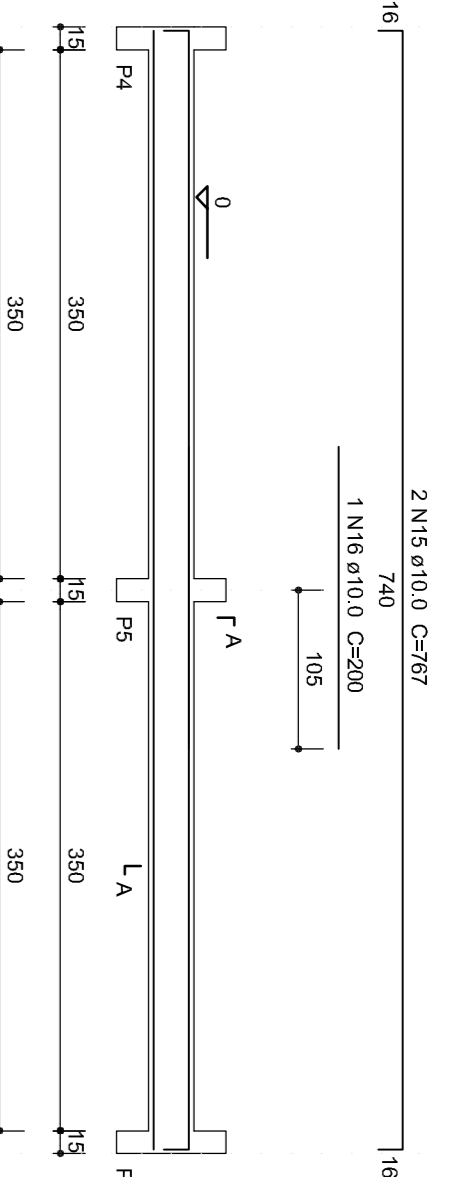
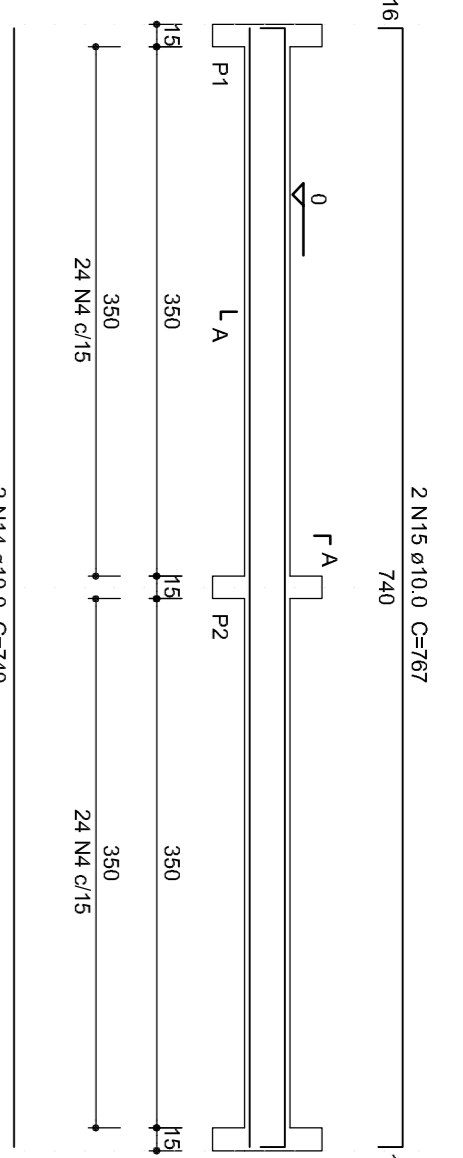
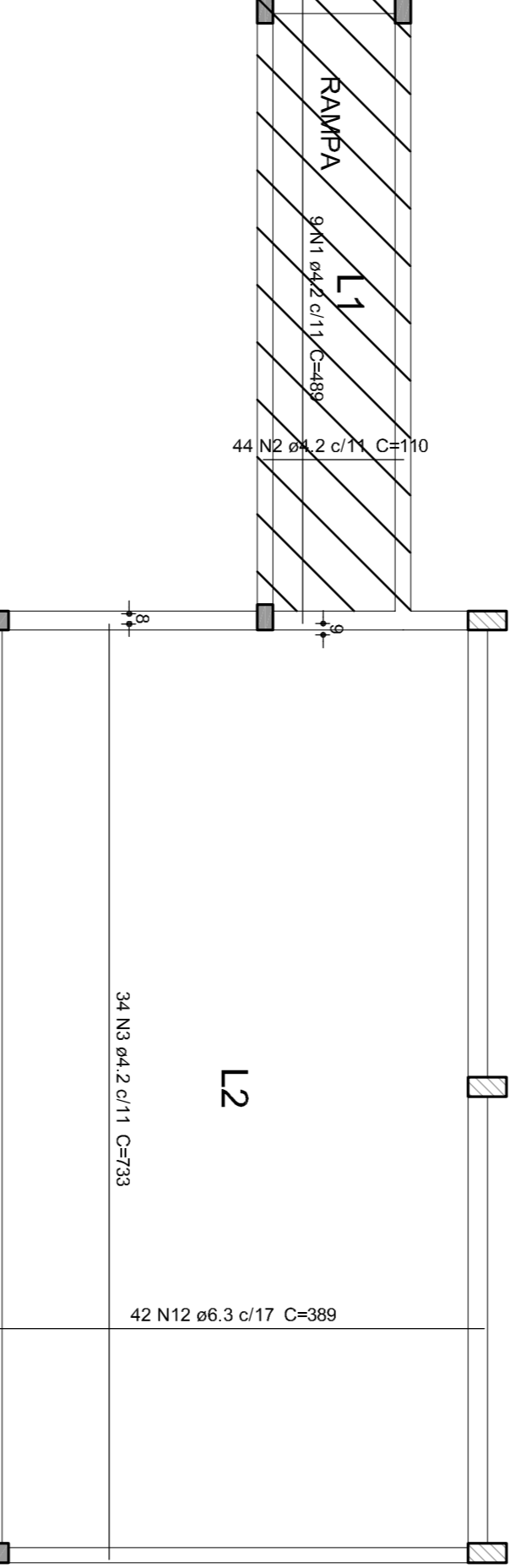
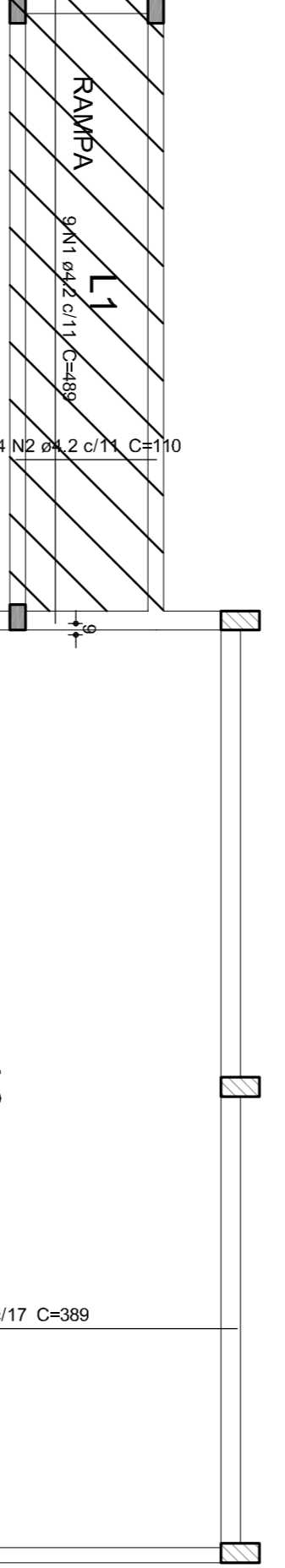
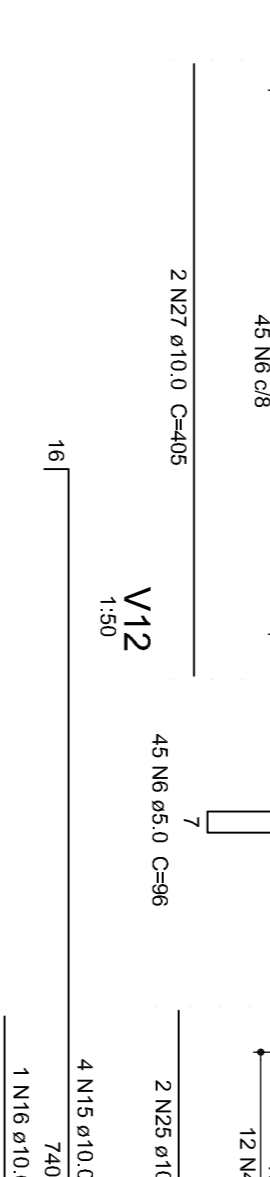
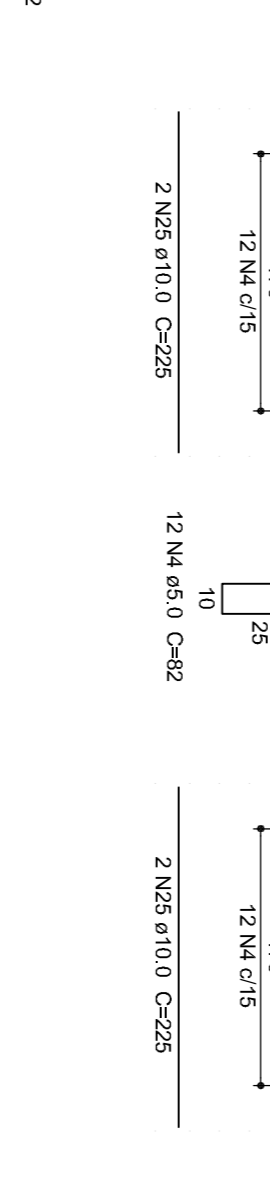
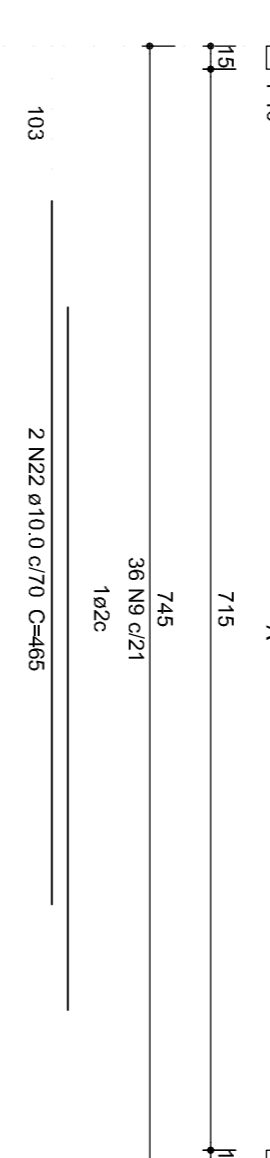


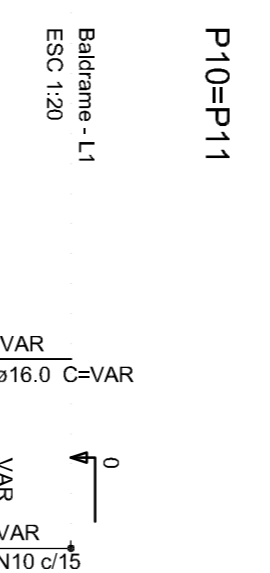
Armação Vigas do Baldrame



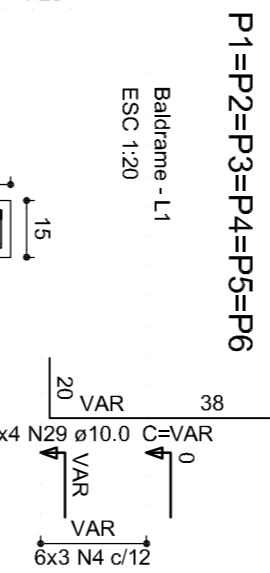
Relação do aço table with columns for steel type (B5, V2, V3, V4, V5, V8, V9, V10, V11), quantity, diameter, and length.



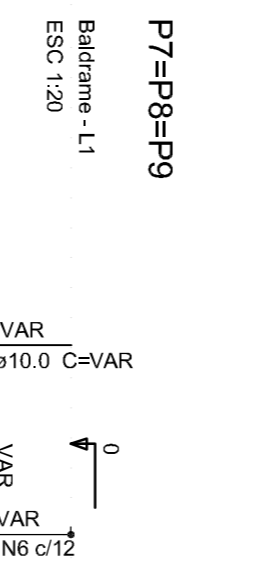
P10=P11



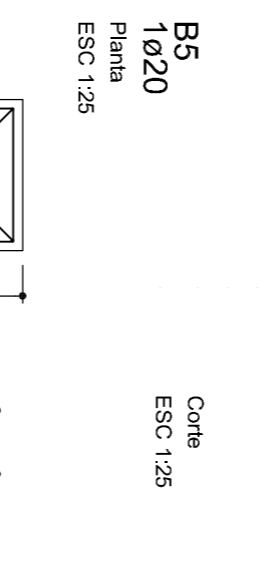
P1=P2=P3=P4=P5=P6



P7=P8=P9



B5

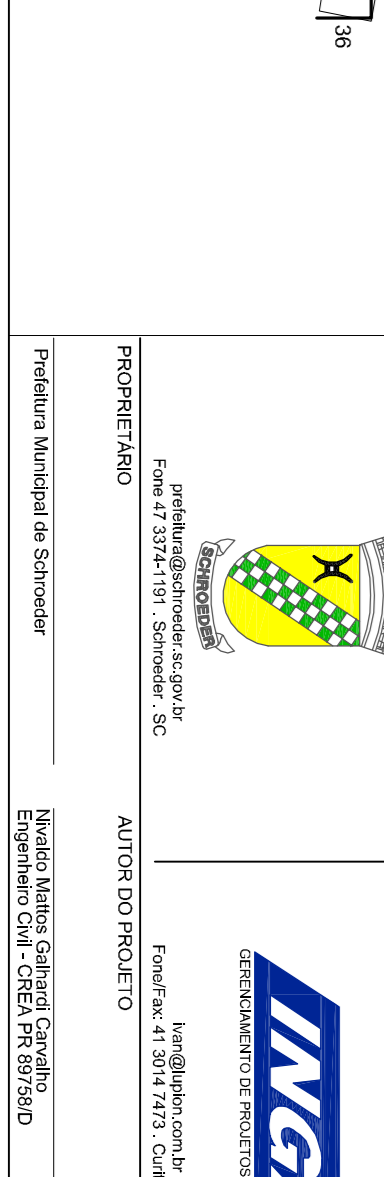
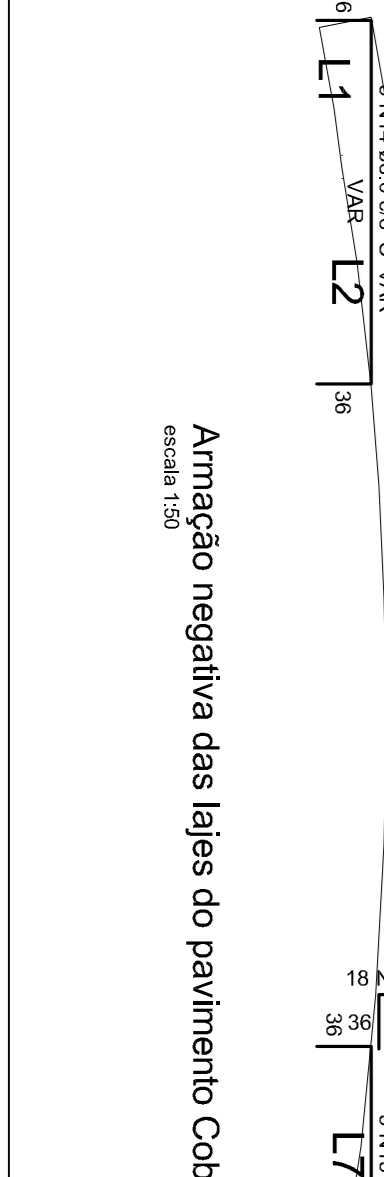
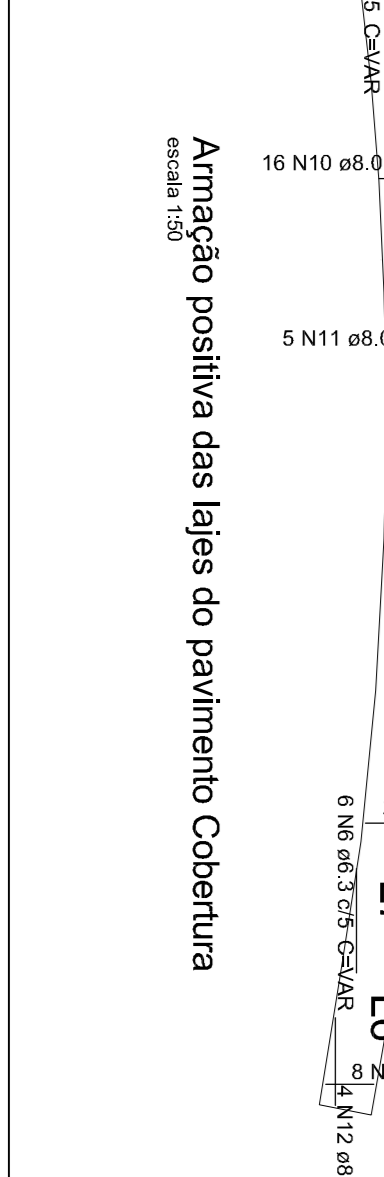
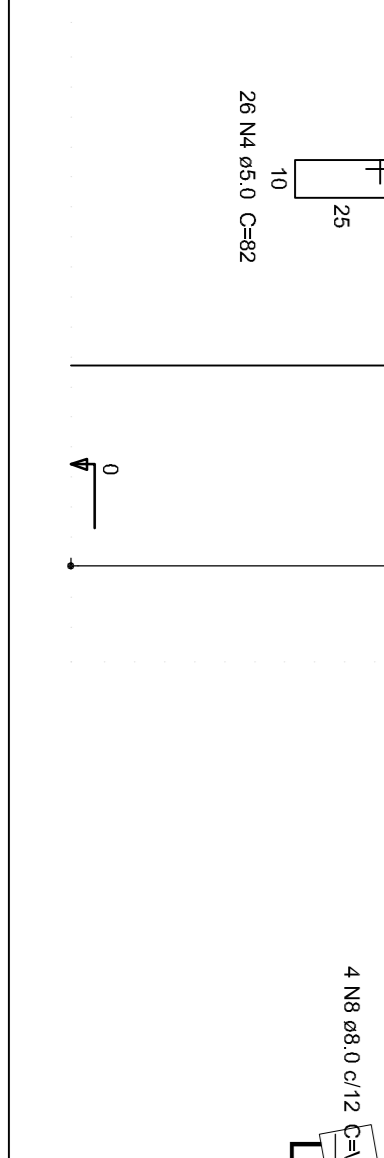
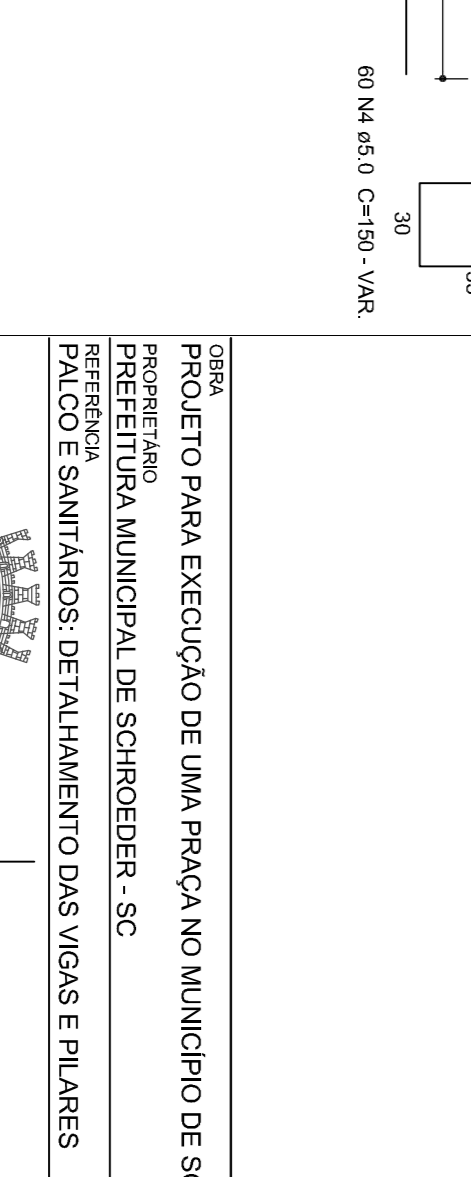
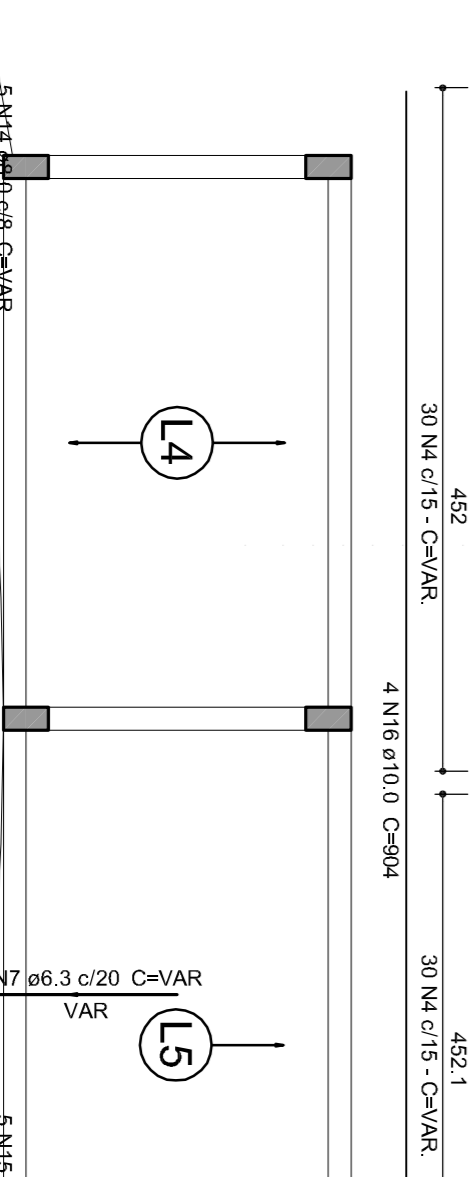
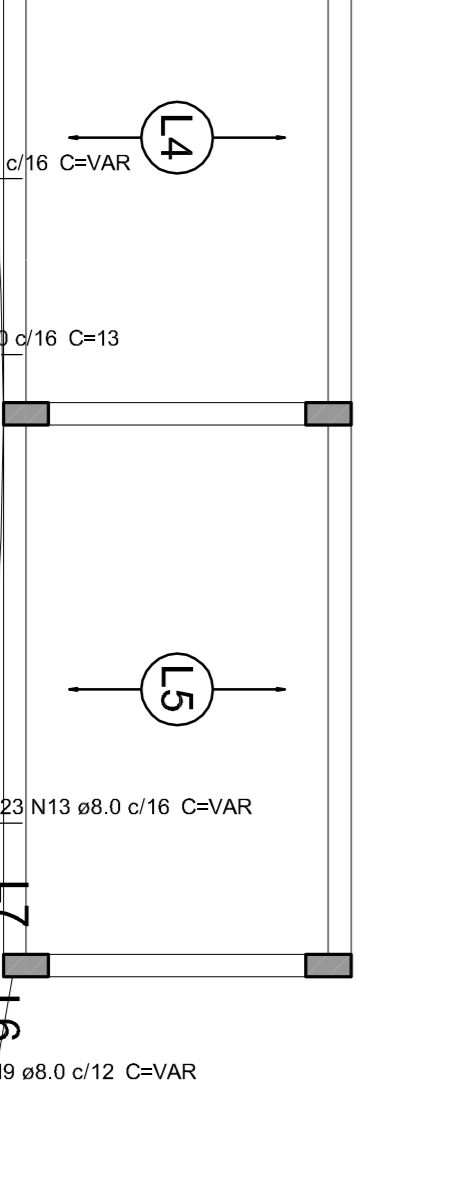
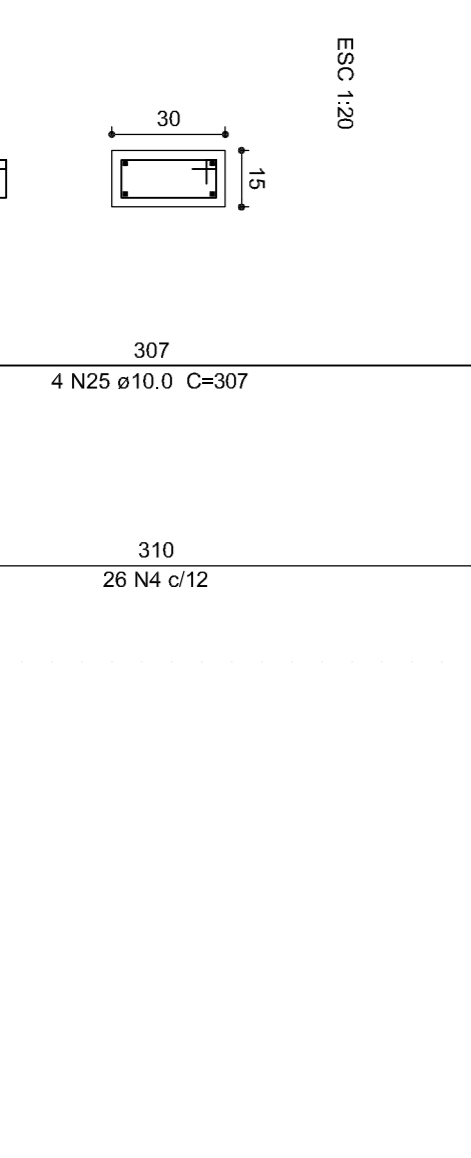
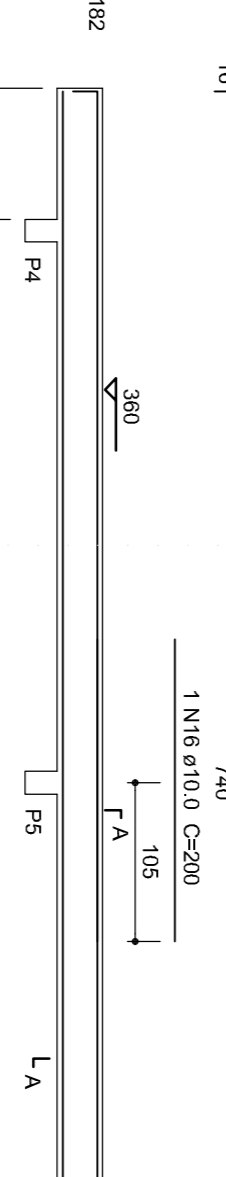
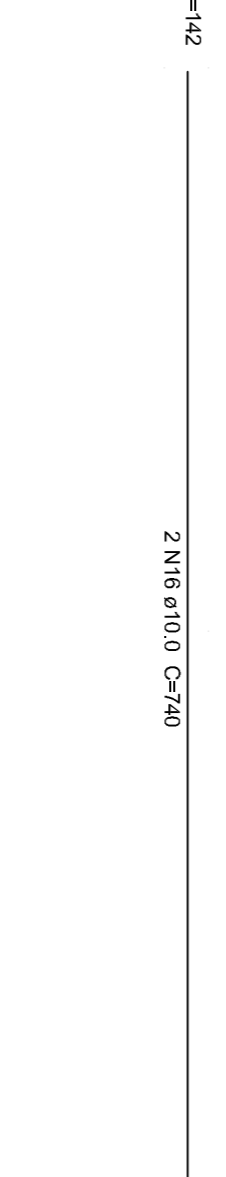
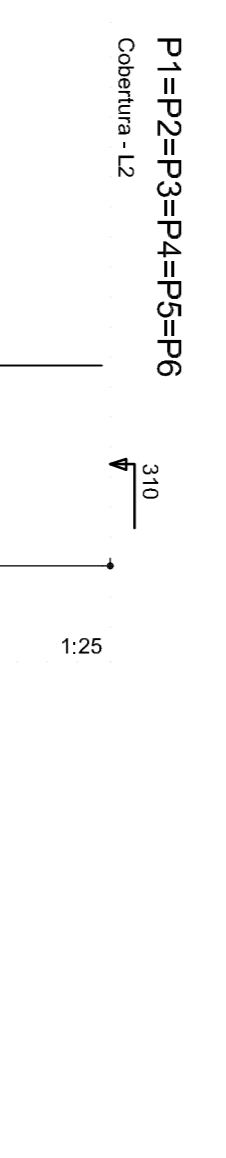
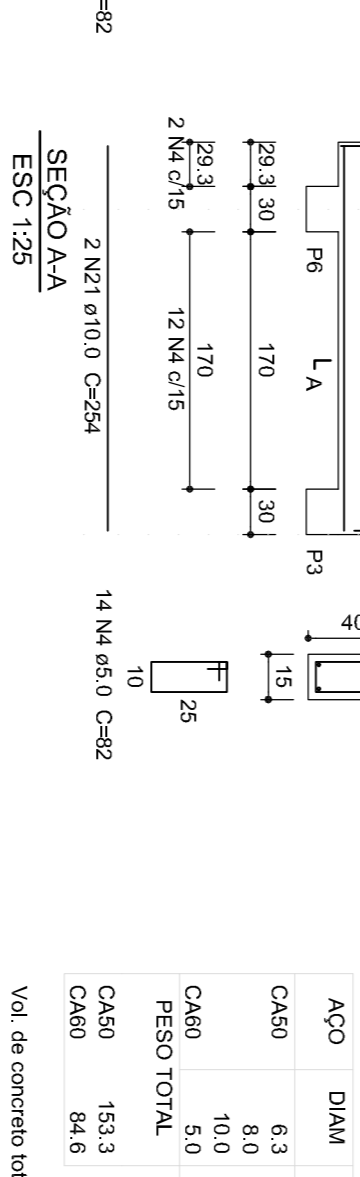
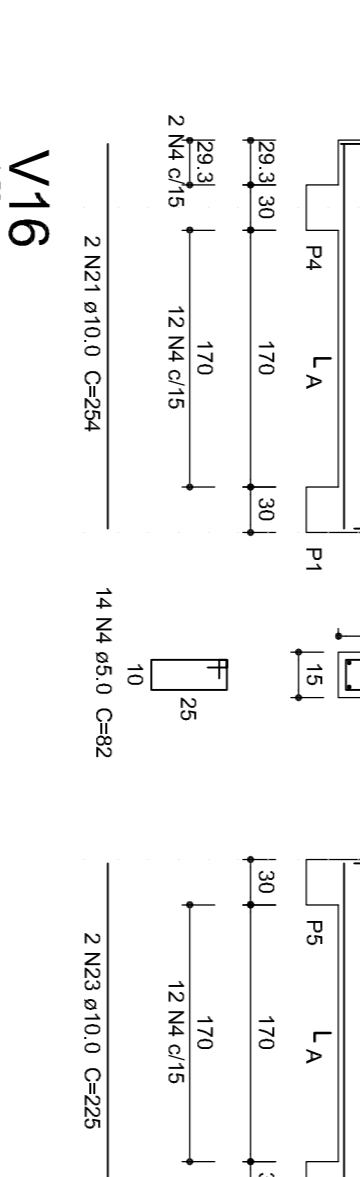
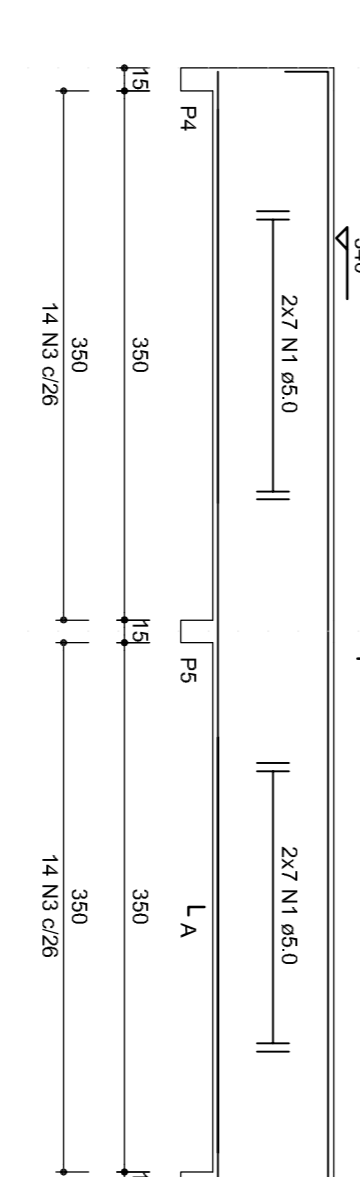
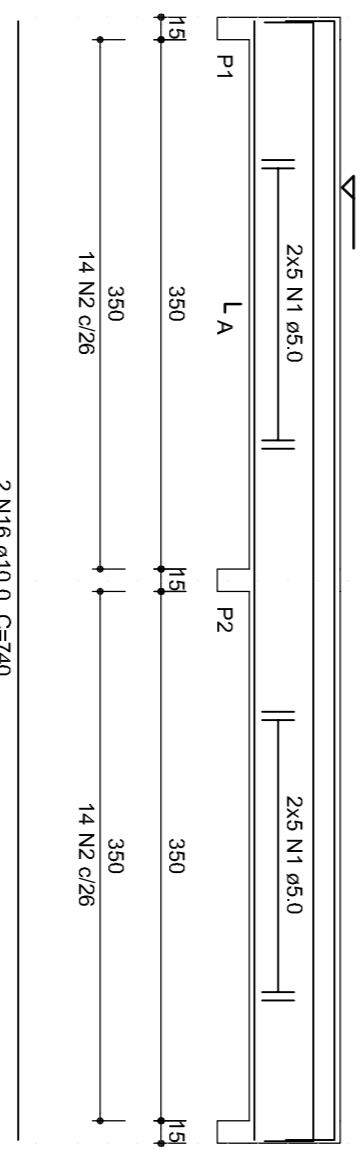
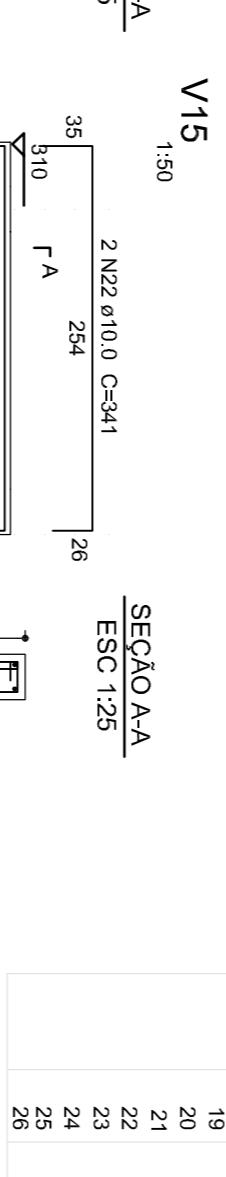
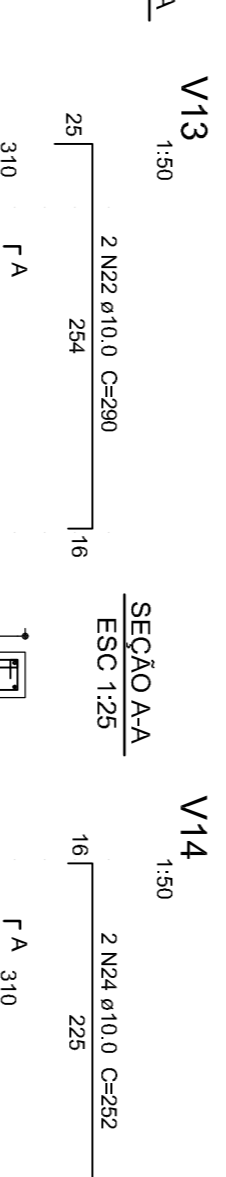
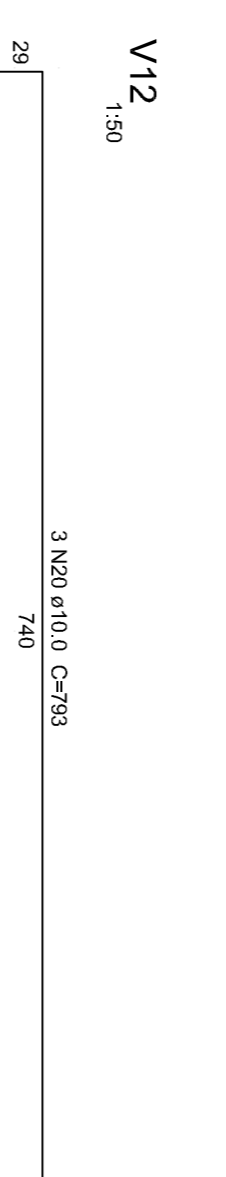
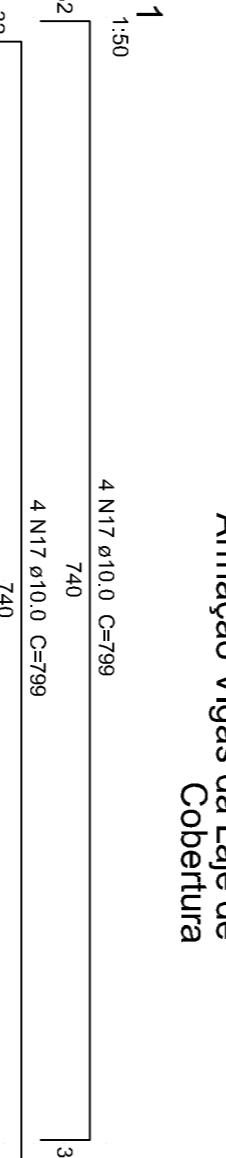


Resumo do aço table with columns for steel type (CA50), diameter, total length, and percentage of reinforcement.

Vol. de concreto total (C-20) = 8.15 m³

Vol. de concreto total (C-20) = 8.15 m³

Relação do aço



Resumo do aço table with columns for steel type (CA50), diameter, total length, and percentage of reinforcement.

Vol. de concreto total (C-25) = 5.05 m³

Vol. de concreto total (C-25) = 5.05 m³

Project information including 'OBRA', 'PROPRIETÁRIO', 'PROFESSOR RESPONSÁVEL TÉCNICO', 'RESPONSÁVEL TÉCNICO', and 'PROFESSOR RESPONSÁVEL TÉCNICO' fields with corresponding names and signatures.

Company logo for INGA Engenharia e Construção Civil and contact information.