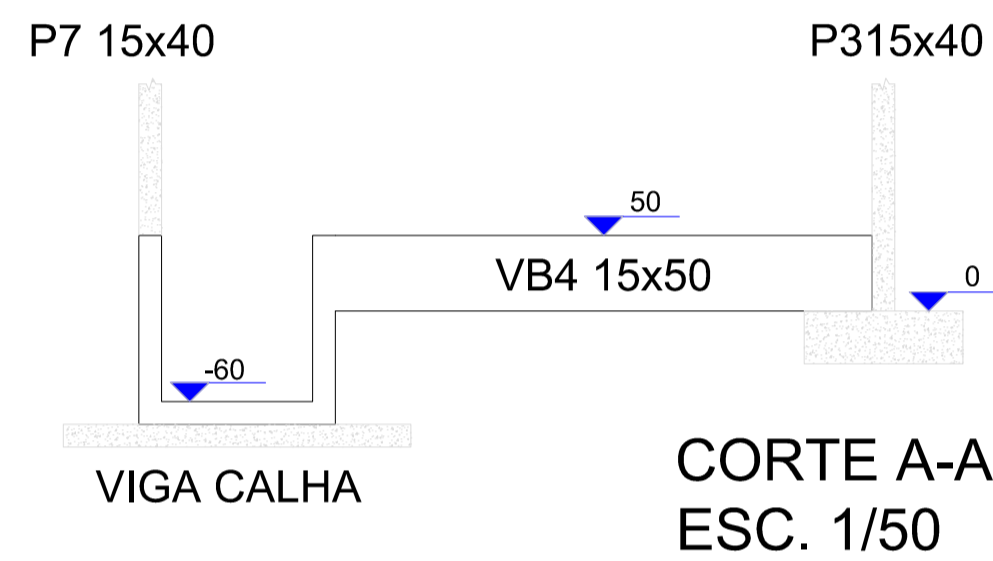
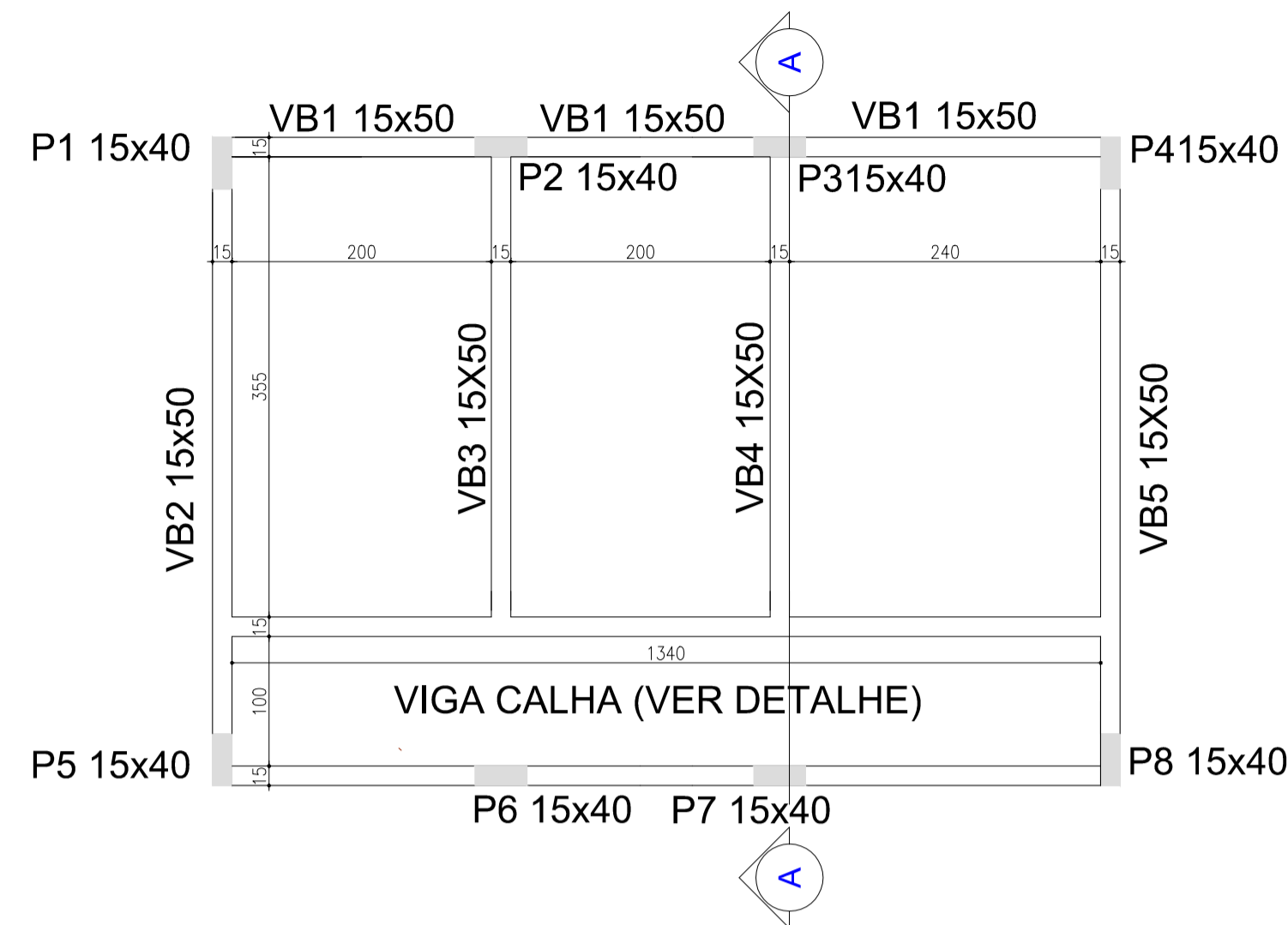
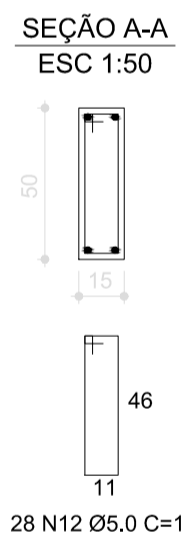
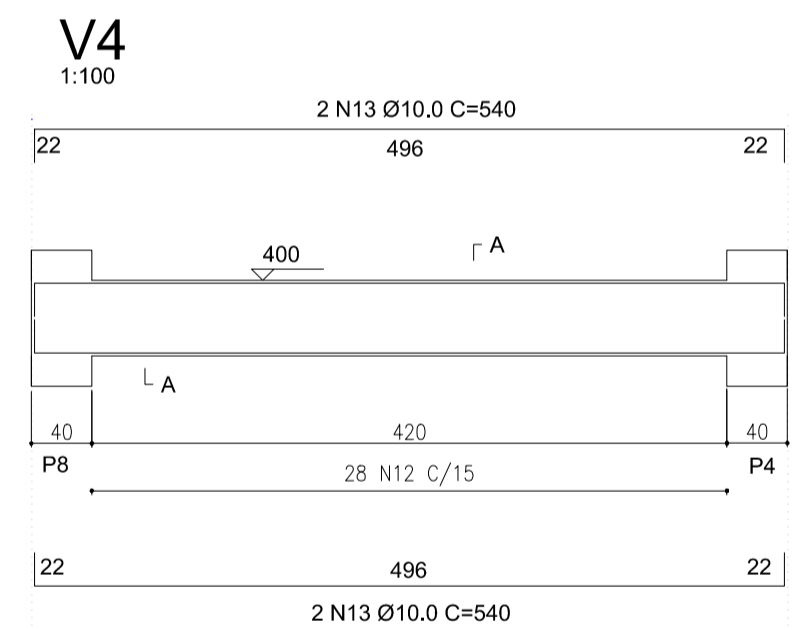
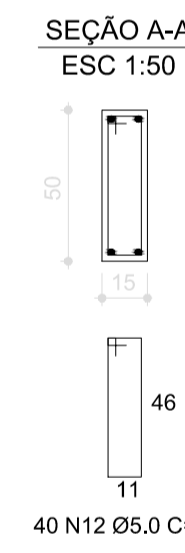
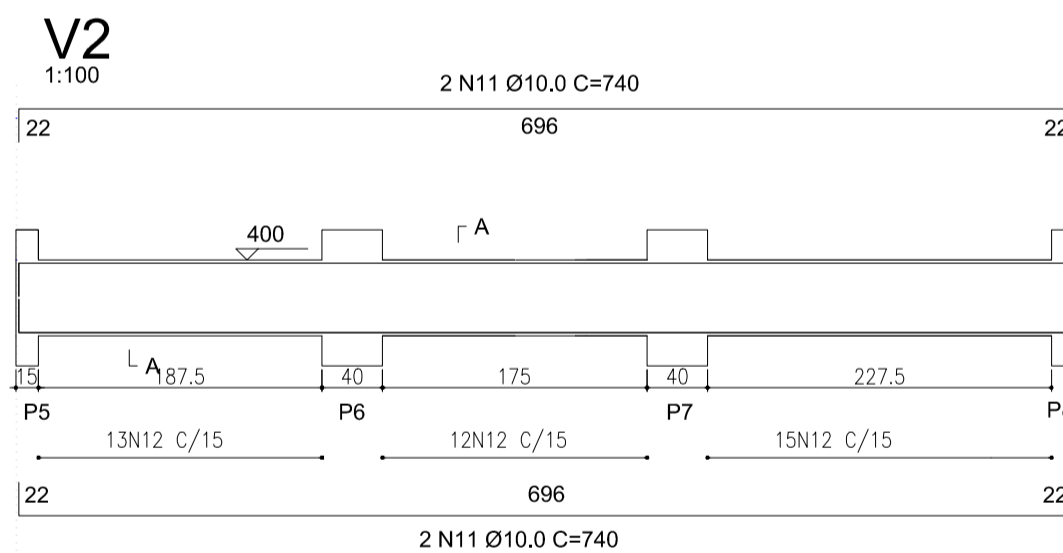
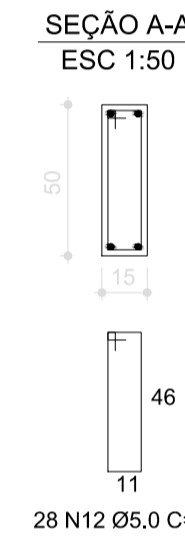
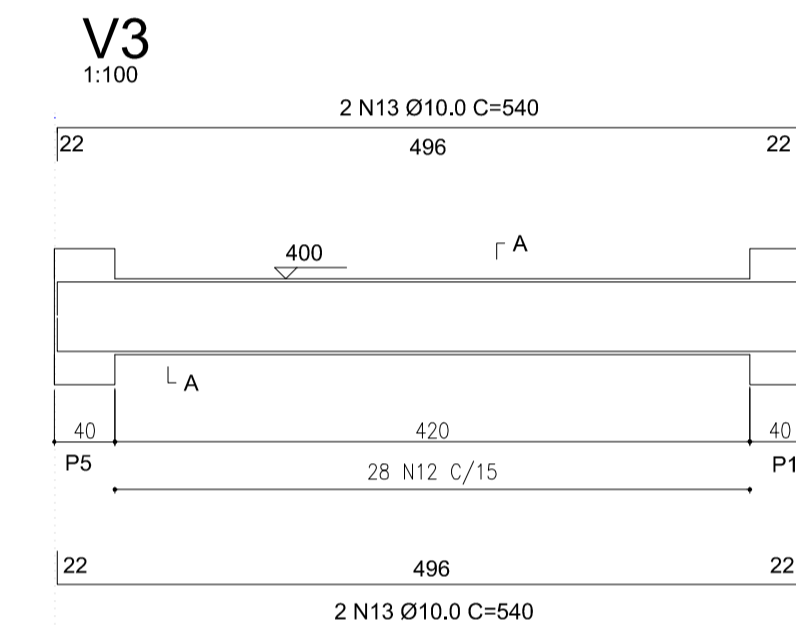
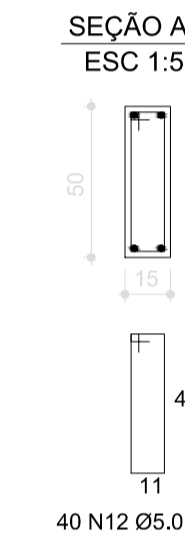
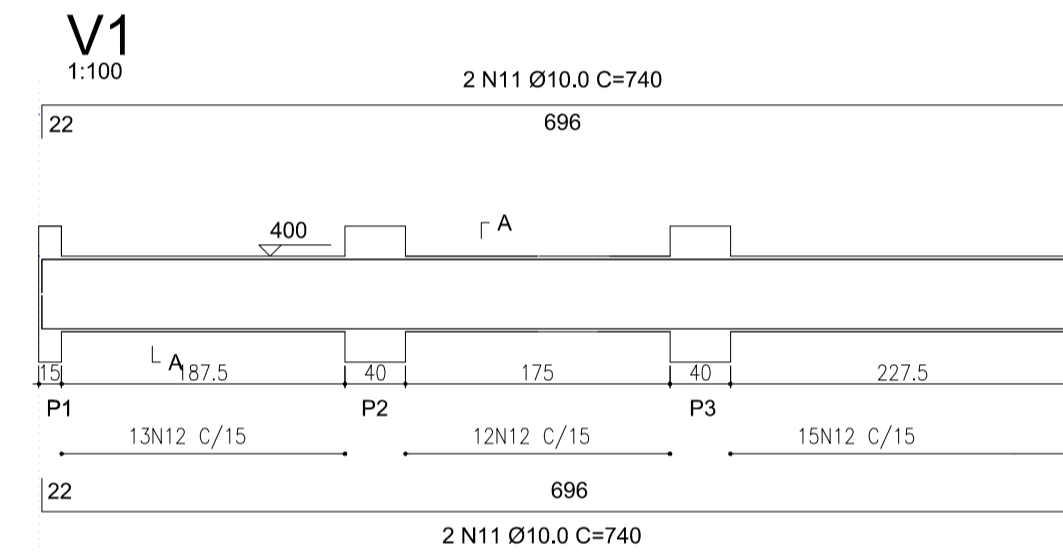
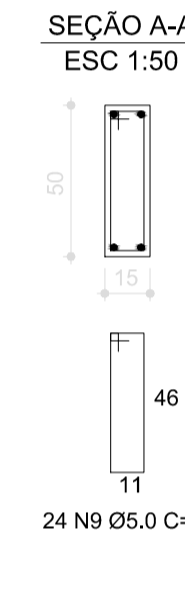
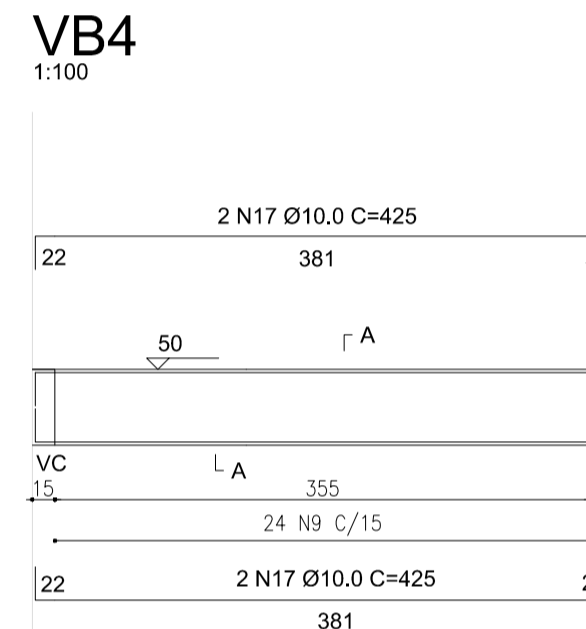
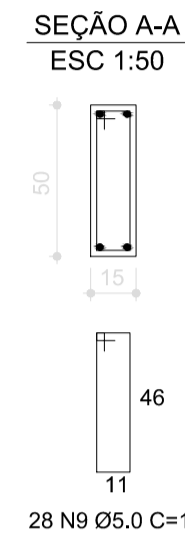
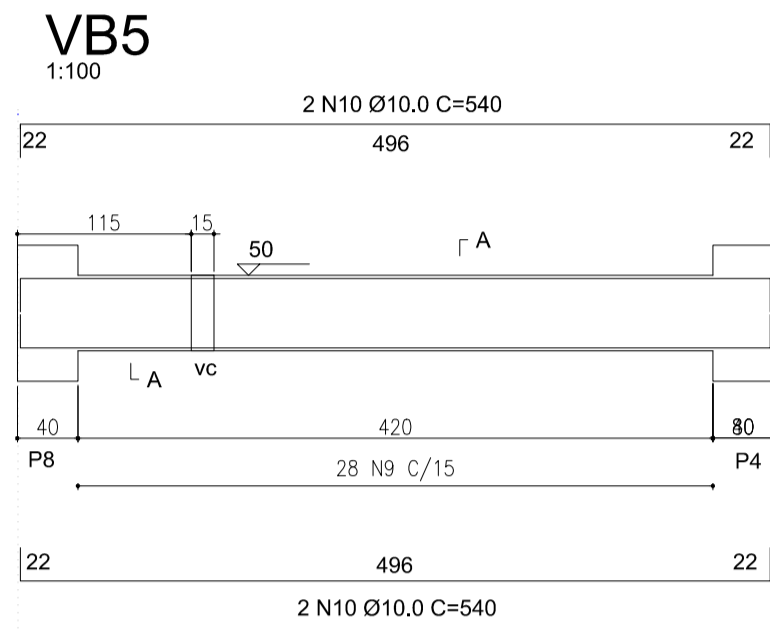
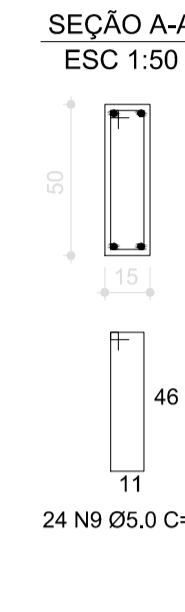
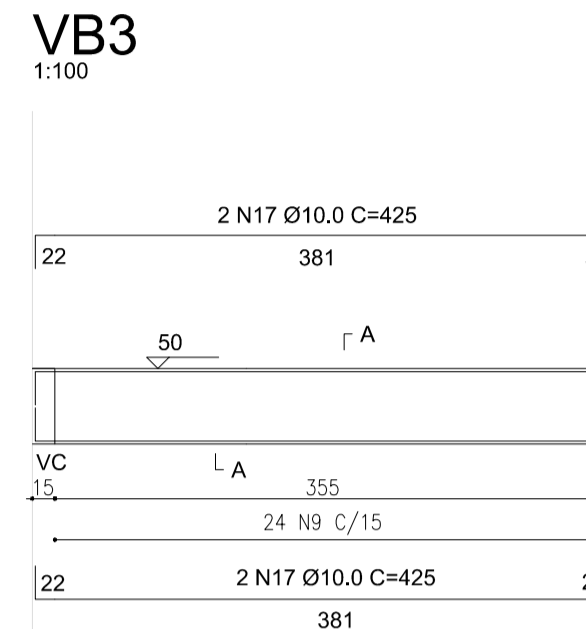
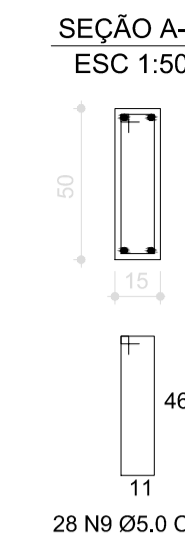
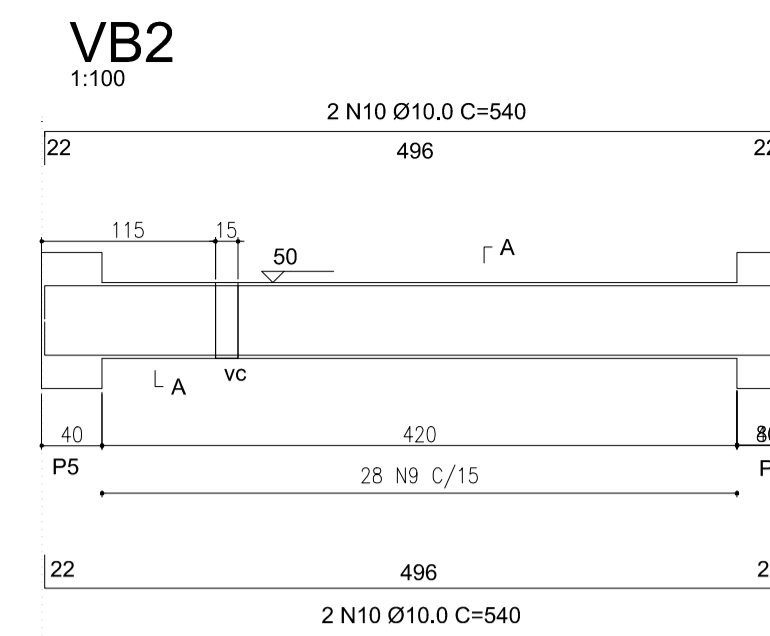
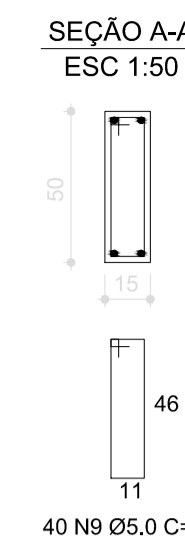
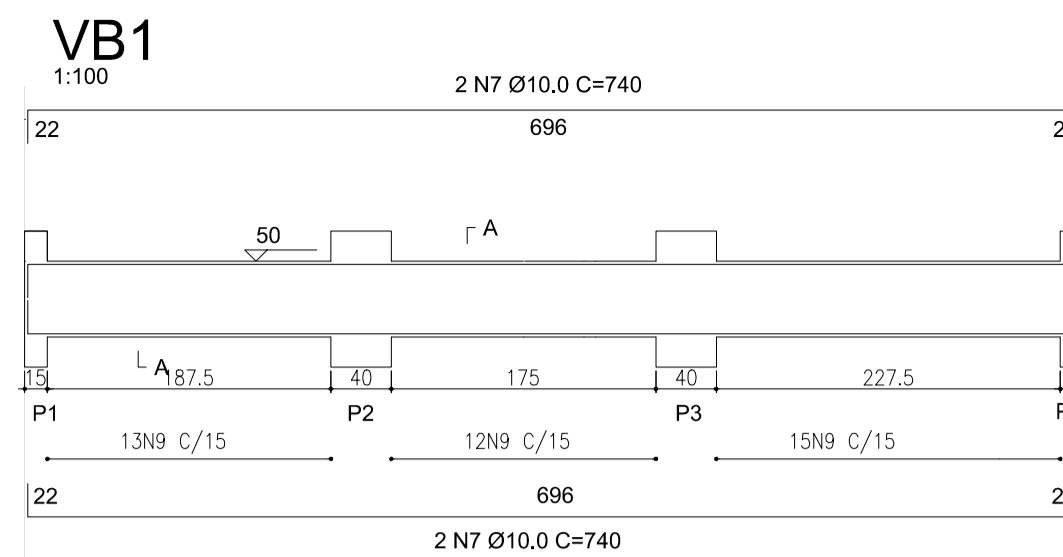


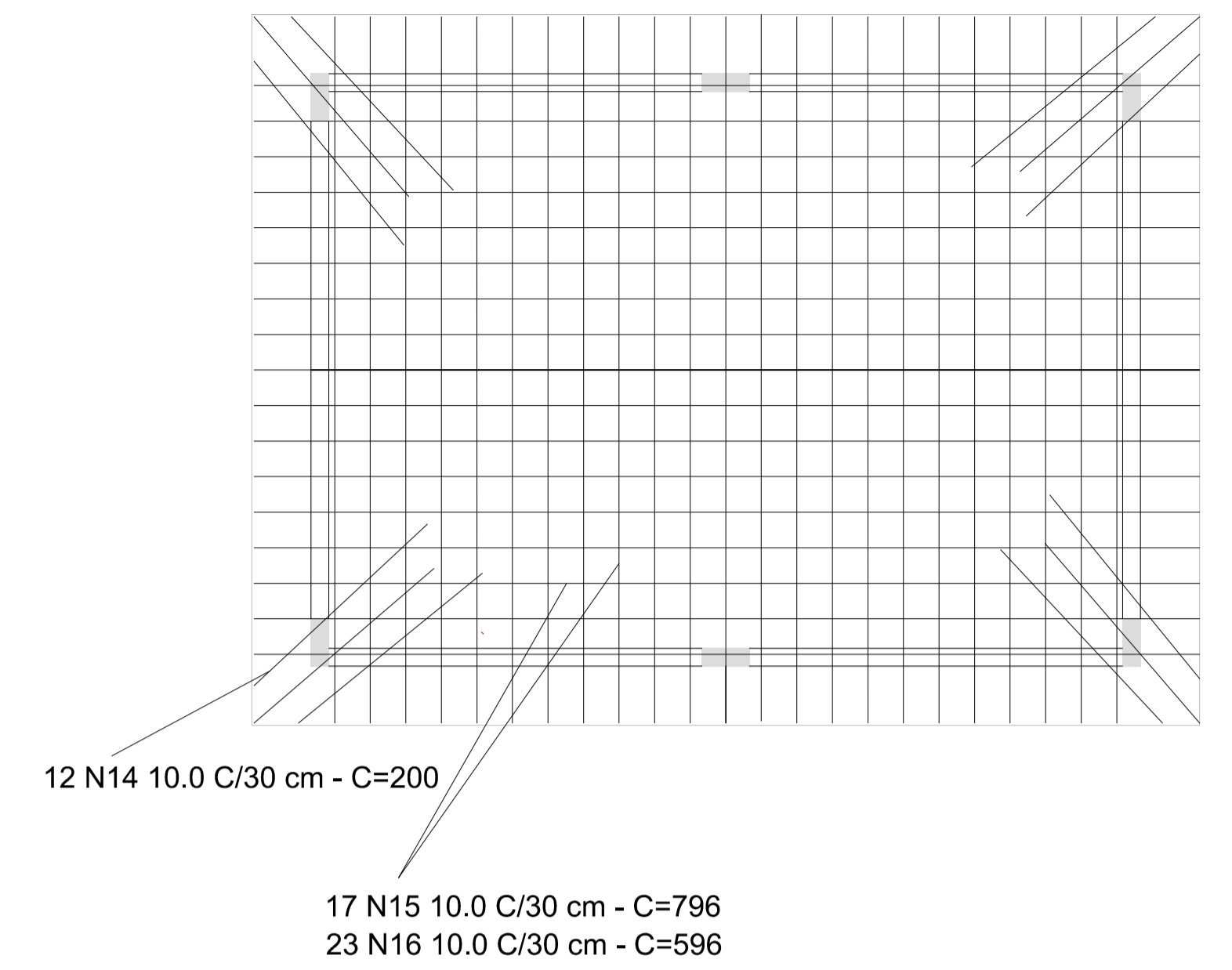
PLANTA DE FORMA PAVIMENTO TÉRREO
DA CASA DE QUÍMICA - ESC. 1/50



CORTE A-A
ESC. 1/50



ARMADURA DA LAJE DE COBERTURA
DA CASA DE QUÍMICA - ESC. 1/50



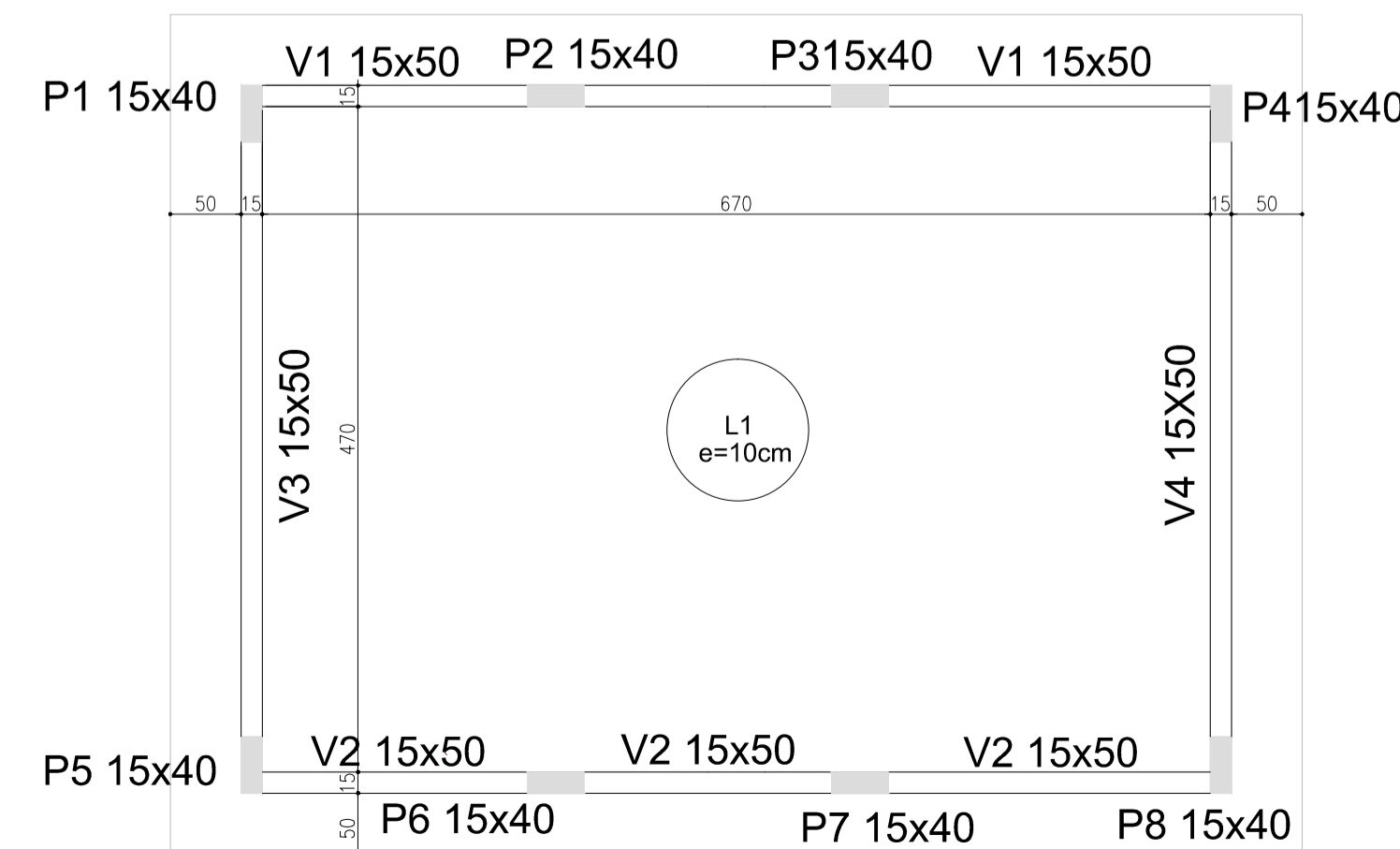
RELAÇÃO DO AÇO - CASA DE QUÍMICA

AÇO	N	DIAM	Q	UNIT (cm)	C.TOTAL (cm)
	1	8.0	40	155	6200
	2	8.0	36	180	6480
	3	5.0	24	106	2544
	4	10.0	16	100	1600
	5	5.0	192	106	20352
	6	10.0	32	345	11040
	7	10.0	4	740	2960
	8	10.0	16	75	1200
	9	5.0	144	126	18144
	10	10.0	8	540	4320
	11	10.0	8	740	5920
	12	5.0	140	126	17640
	13	10.0	8	540	4320
	14	10.0	12	200	2400
	15	10.0	17	796	13532
	16	10.0	23	596	13708
	17	10.0	8	425	3400

RESUMO DO AÇO

AÇO	DIAM	C.TOTAL (m)	PESO+10% (kg)
CA50	8.0	126.80	55.79
	10.0	644.00	446.29
CA60	5.0	586.80	103.28
PESO TOTAL			
CA50	502.08		
CA60	103.28		
		ÁREA FORMA (m2) = 134.68m2	
		CONCRETO = 11.48m3	
		C-30	

PLANTA DE FORMA PAVIMENTO COBERTURA
DA CASA DE QUÍMICA - ESC. 1/50



- CONCRETO UTILIZADO: C30 (30MPA)
- AS FORMAS DEVEREM SER MOLHADAS ANTES DA CONCRETAGEM
- RESPEITAR O TEMPO DE CURA DE VIGAS E LAJES DE 21 DIAS
- COLOCAR ESPAÇADORES PARA ARMADURA, RESPEITANDO OS COBRIMENTOS DE CONCRETO DEFINIDOS NO DETALHAMENTO DE FUNDAMENTOS, PILARES, VIGAS E LAJES

 E-mail: mjanessen@best.com.br / crkitzberger@best.com.br Fone: (47) 9975-4662 / 9973-3899	PROPRIETÁRIO:	PREFEITURA MUNICIPAL DE SCHROEDER
	RESPONSÁVEL TÉCNICO:	Eng. Civil Roberto Kitzberger Crea 045.173-9
PROJETO ESTRUTURAL:	CASA DE QUÍMICA	
ESPECIFICAÇÃO:	DATA: JUNHO / 2015	FCK: C30
REVISÃO Nº 01	REVISÃO Nº 01	FOLHA: 02/03
	24/06/2015	