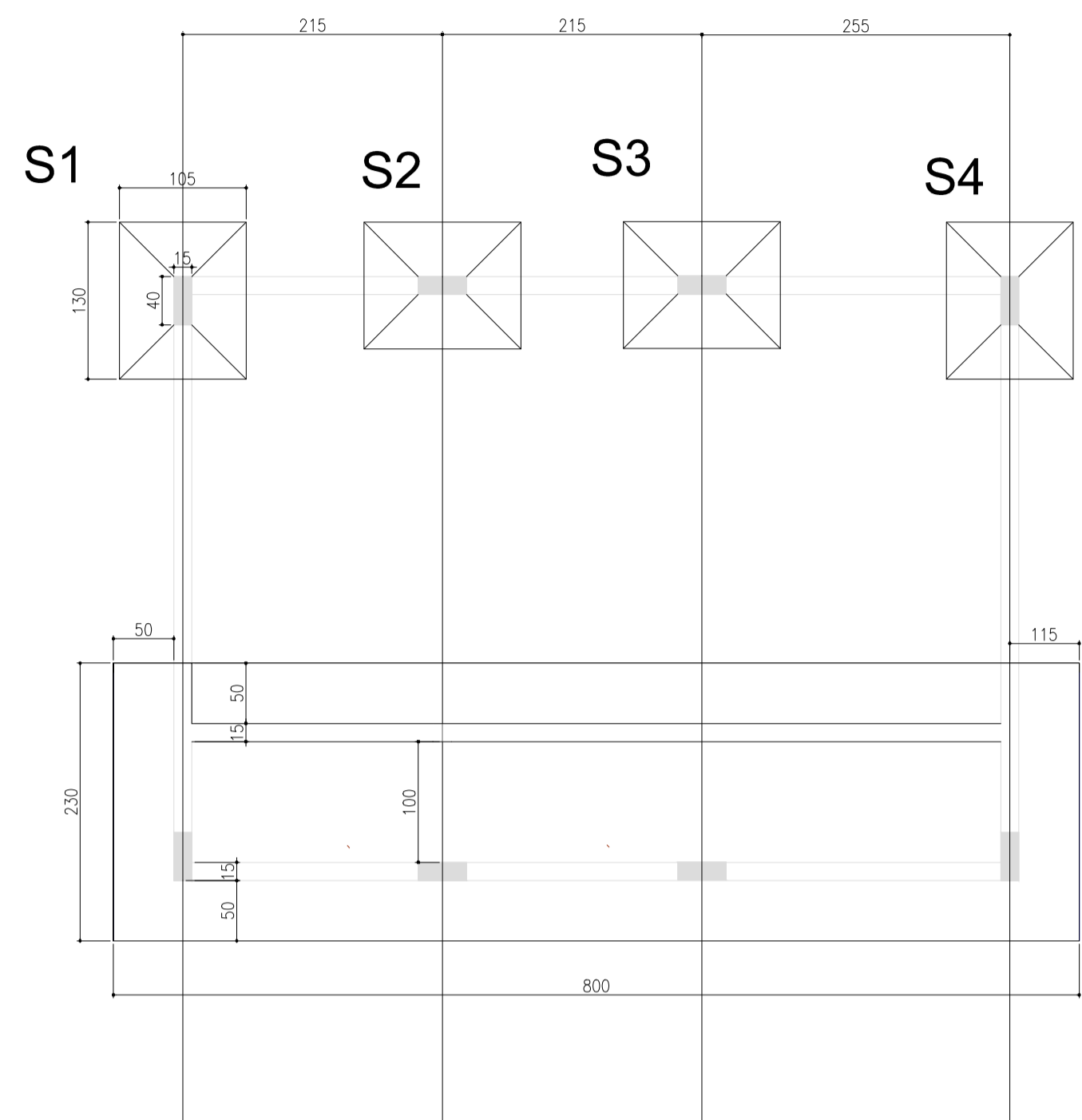


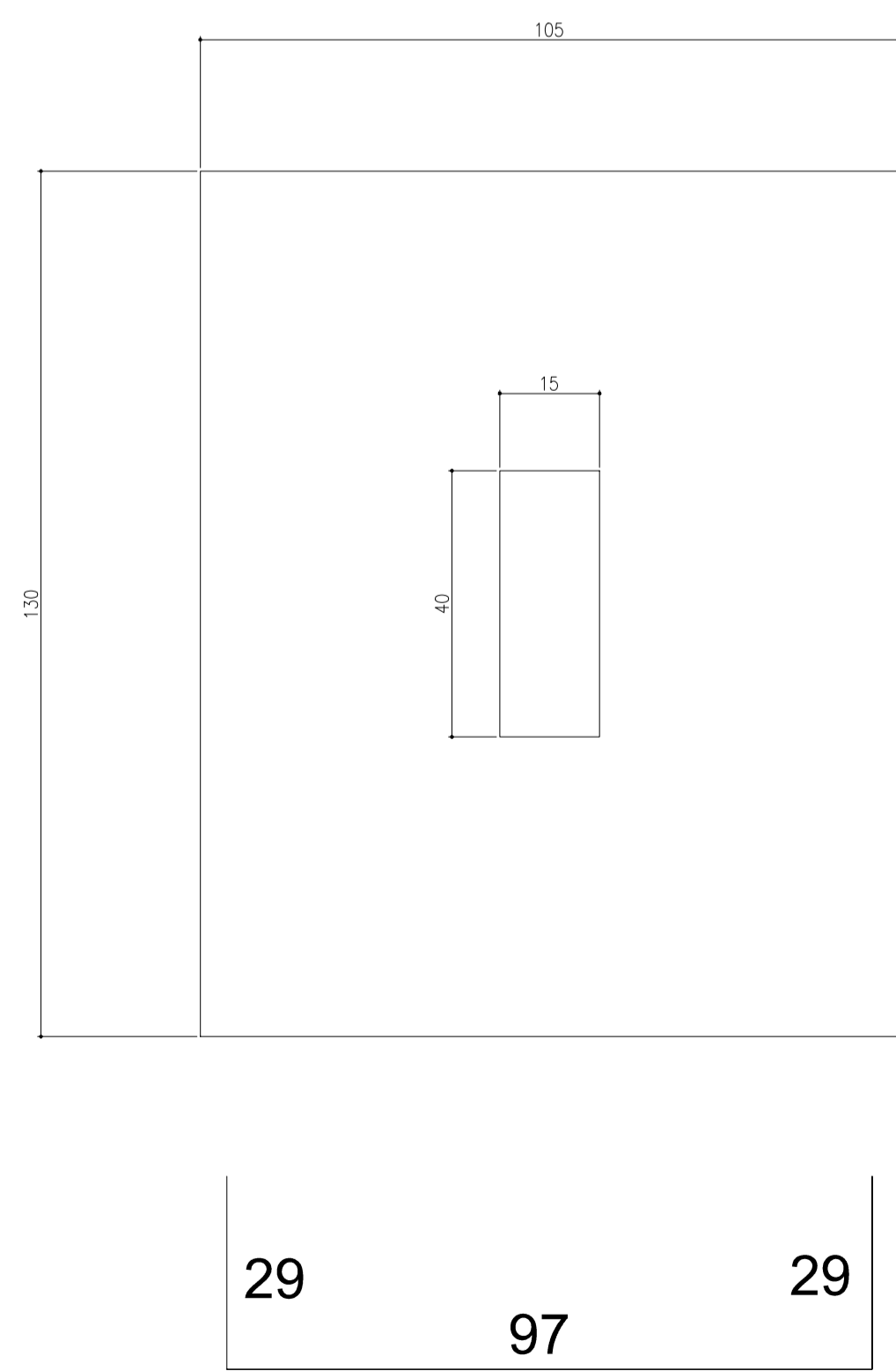
PLANTA DE LOCAÇÃO DAS SAPATAS
DA CASA DE QUÍMICA - ESC. 1/50



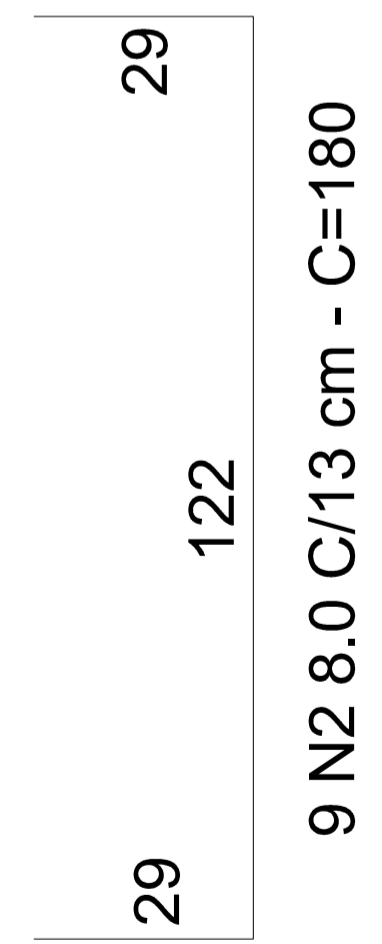
SAPATA CORRIDA - SC 1

SAPATA 4x - ESC. 1/10

S1=S2=S3=S4



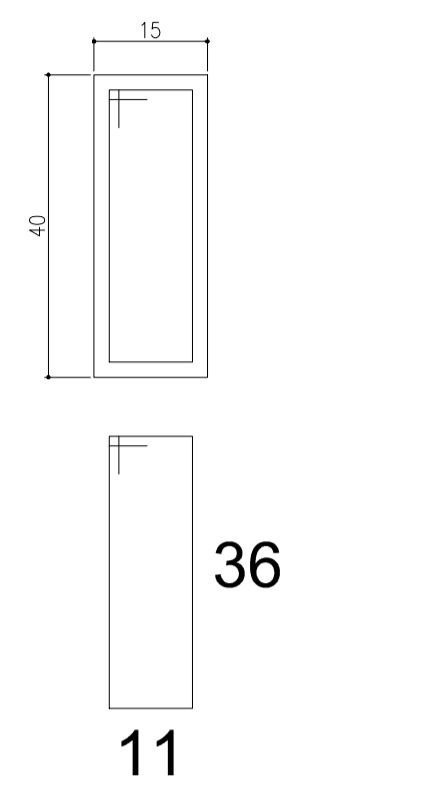
10 N1 8.0 C/13 cm - C=155



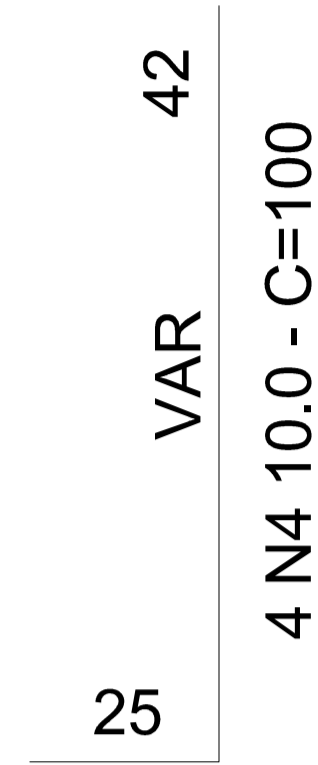
9 N2 8.0 C/13 cm - C=180

ESPERA PILARES - 4x - ESC. 1/10

P1=P2=P3=P4

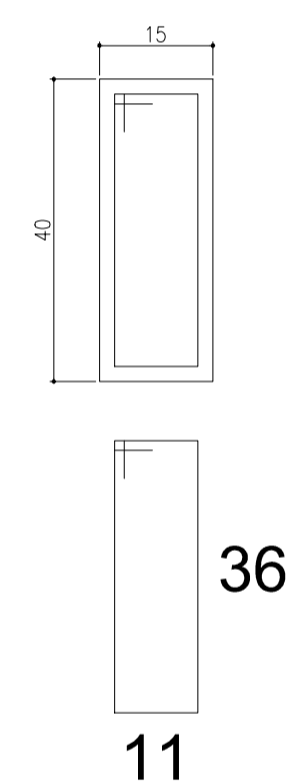


3 N3 5.0 - C=106

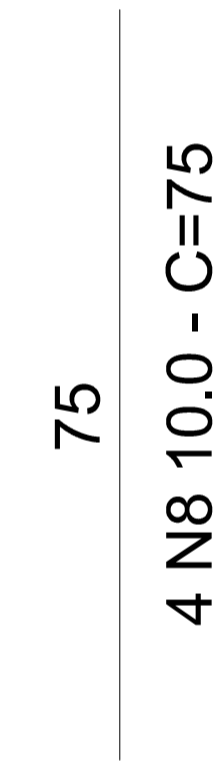


ESPERA PILARES - 4x - ESC. 1/10

P5=P6=P7=P8 (amarrar na armadura da viga calha, transpasse de 33cm)

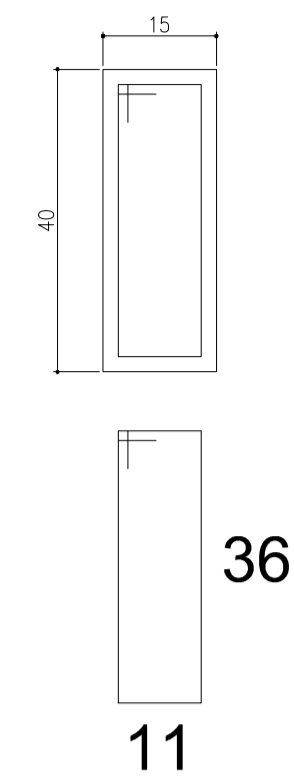


3 N3 5.0 - C=106



PILAR PADRÃO - 8x - ESC. 1/10

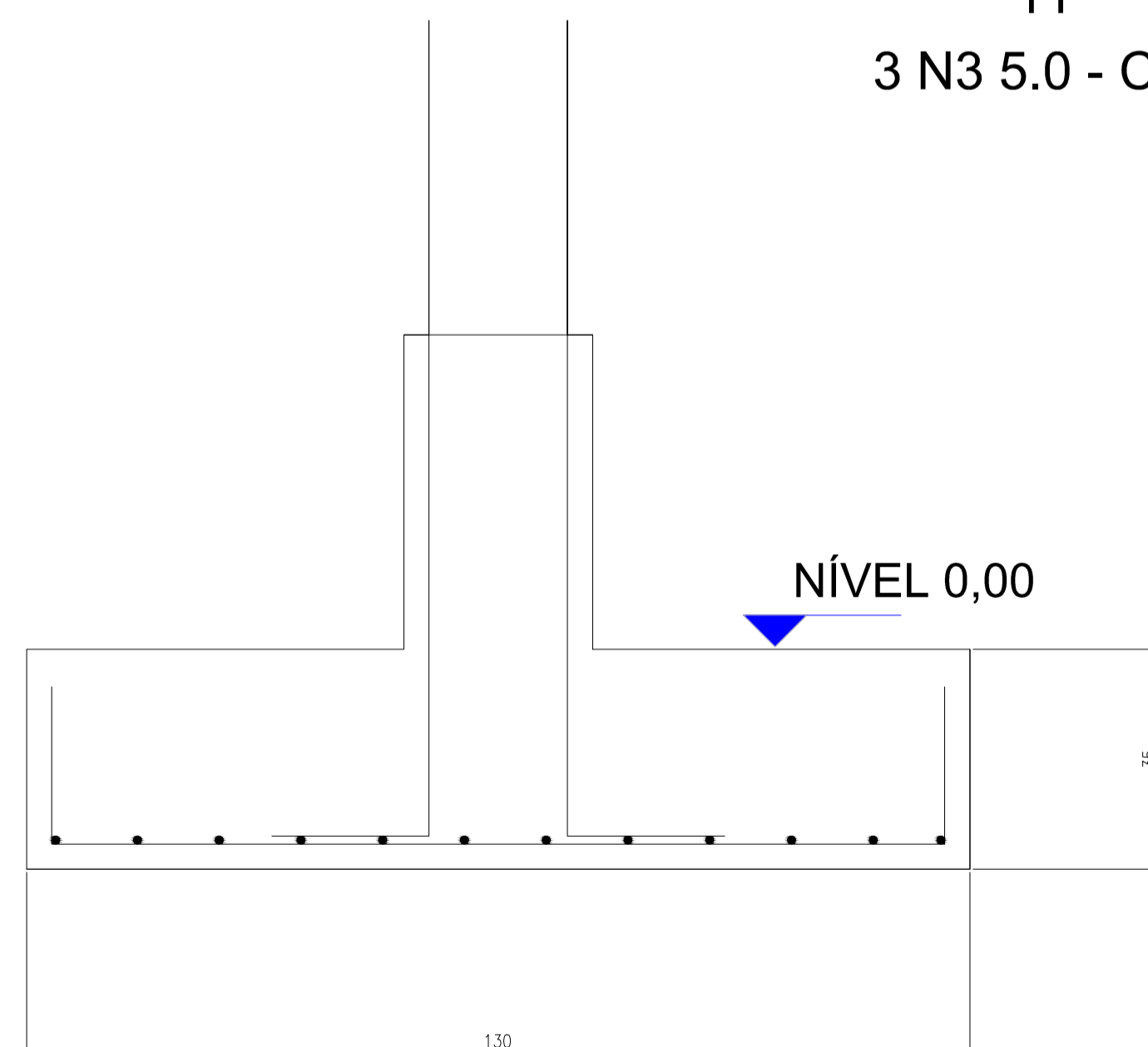
P1=P2=P3=P4=P5=P6=P7=P8



24 N5 5.0 - C/15 - C=106

345

4 N6 10.0 - C=345



- CONCRETO UTILIZADO: C30 (30MPa) - AS FORMAS DEVEM SER MOLHADAS ANTES DA OONCRETAGEM - RESPEITAR O TEMPO DE CURA DE VIGAS E LAJES DE 21 DIAS - COLOCAR ESPAÇADORES PARA ARMADURA, RESPEITANDO OS COBRIMENTOS DE CONCRETO DEFINIDOS NO DETALHAMENTO DE - FUNDAÇÕES, PILARES, VIGAS E LAJES	
<p>E-mail: mjanessen@best.com.br / crkitzberger@best.com.br Fone: (47) 9975-4662 / 9973-3899</p>	
PROPRIETÁRIO: PREFEITURA MUNICIPAL DE SCHROEDER	
RESPONSÁVEL TÉCNICO: Eng. Civil Roberto Kitzberger Crea 045.173-9	
PROJETO ESTRUTURAL: CASA DE QUÍMICA	
DATA: JUNHO / 2015	FCK: C30
REVISÃO N° 01 24/06/2015	FOLHA: 01/03